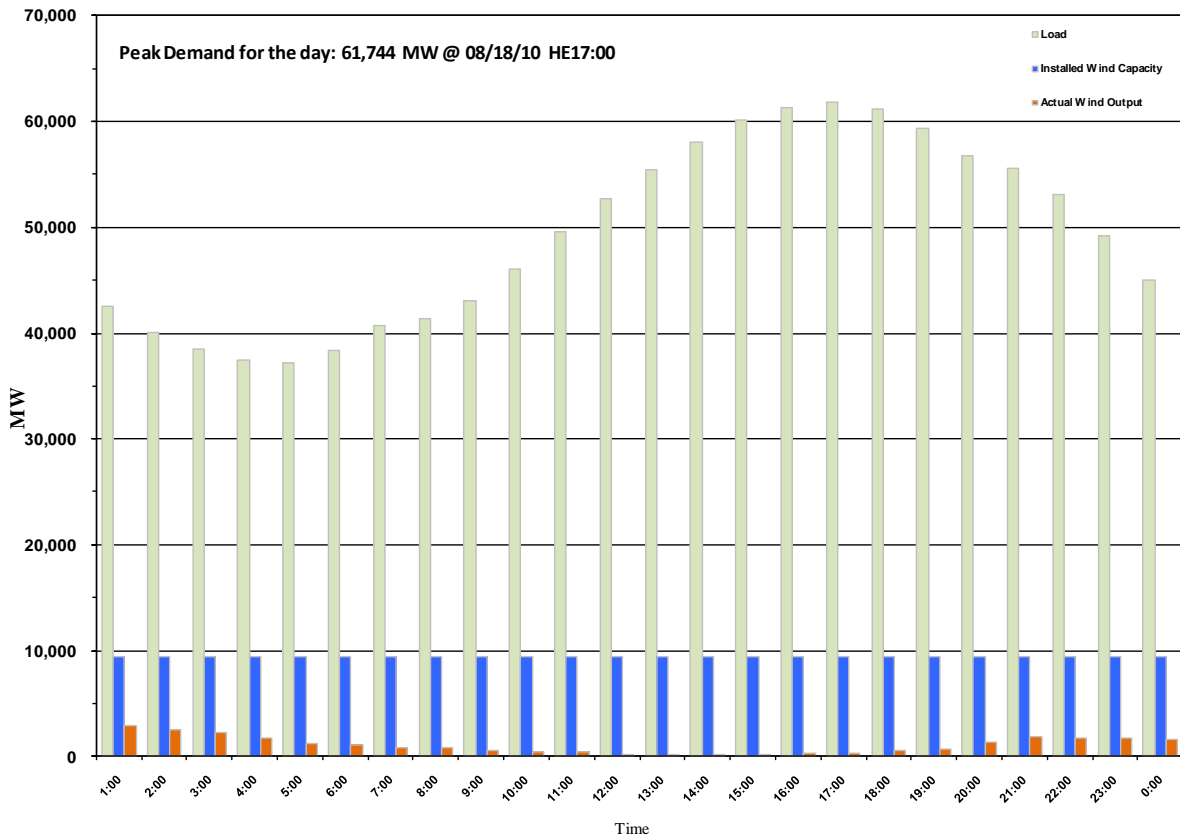




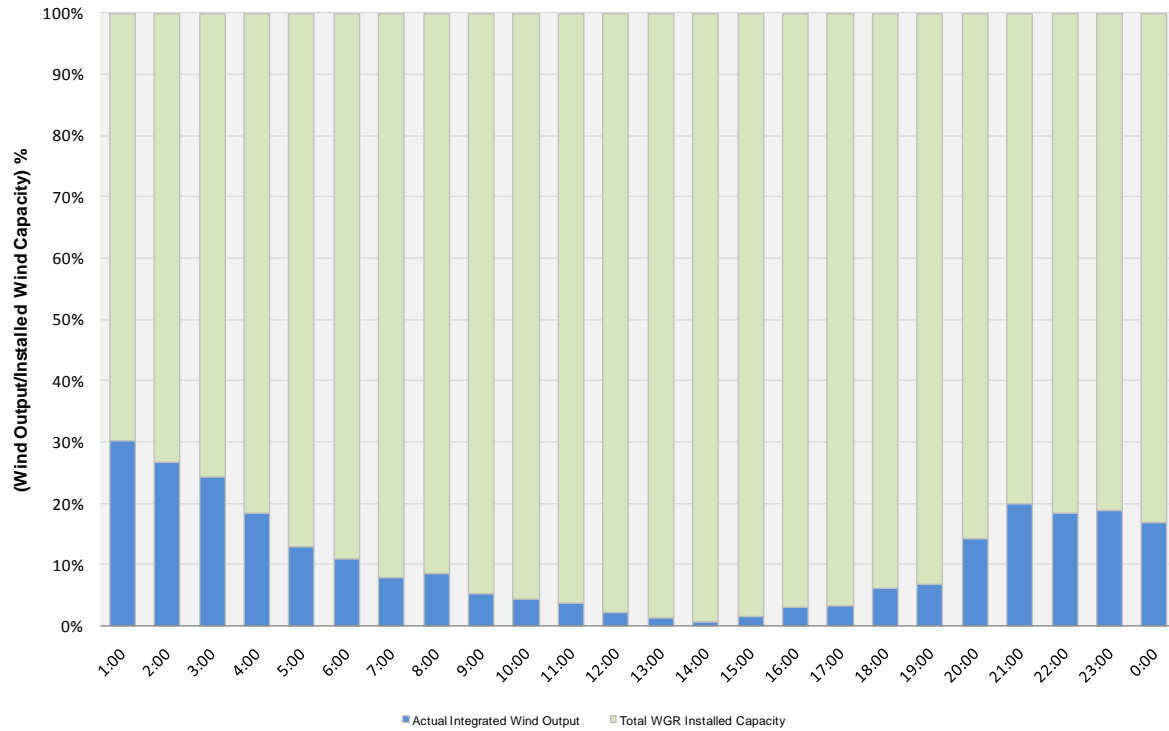
## ERCOT Grid Operations Wind Penetration Report: 08/18/10

Peak Load	<b>61,744 MW</b>
Load Peak Hour	<b>17</b>
Wind Record 06/12/10	<b>7016 MW</b>
Max Wind value	<b>3474 MW</b>
Wind Peak Hour	<b>00:00:08</b>
Wind Penetration %	<b>7.84</b>

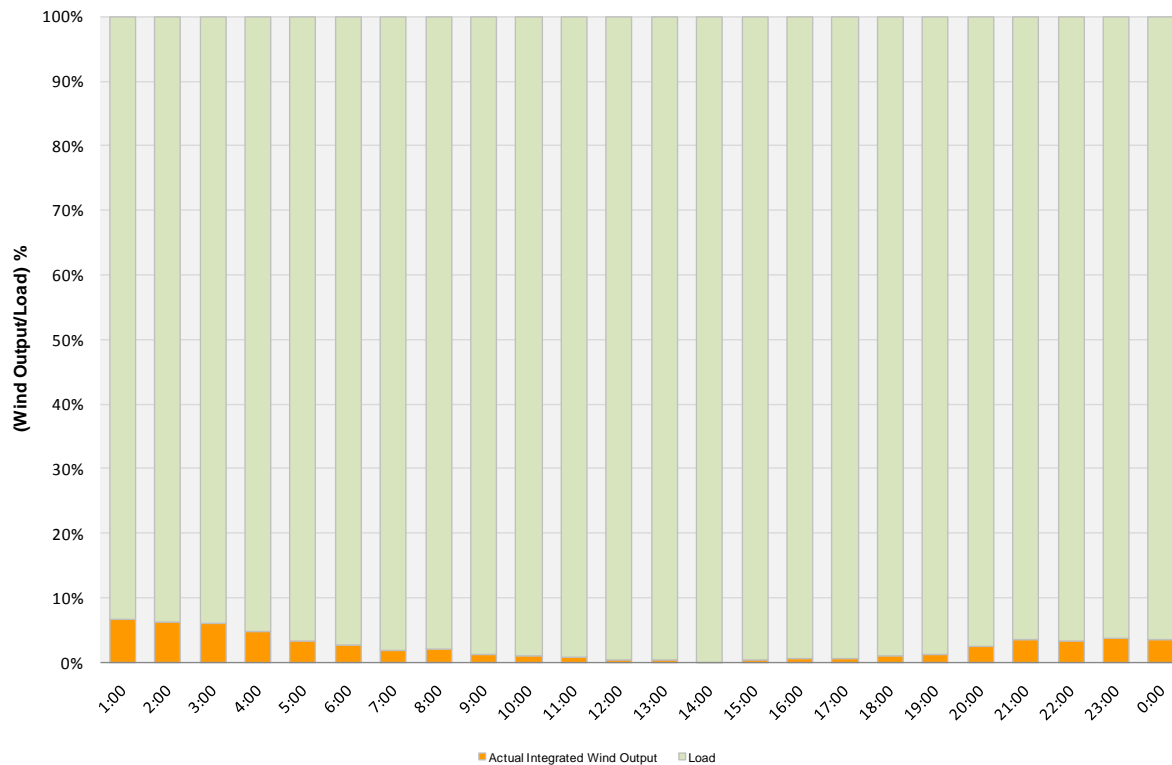




### Actual Wind Output as a Percentage of the Total Installed Wind Capacity 08/18/2010



### Actual Wind Output as a Percentage of the ERCOT Load 08/18/2010





ERCOT Load vs. Actual Wind Output 08/11/10 - 08/18/10

